

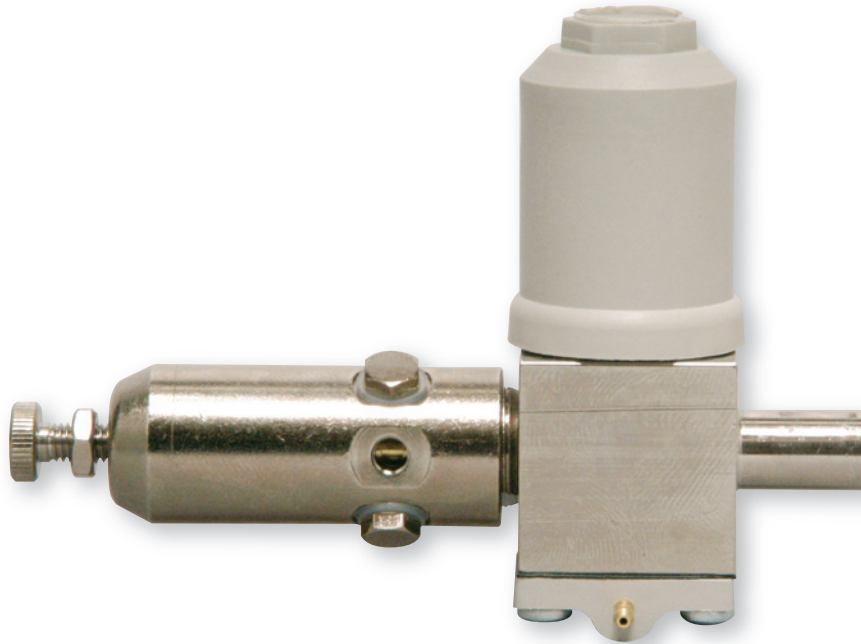


MARR VALVE COMPANY

1815 Oak Street • Granite Falls, MN 56241
Tel: (320) 564-4279 • Fax: (320) 564-2266
www.marrvalve.com • e-mail: info@marrvalve.com

Specializing in Valves for the Dental Industry

MASTER SHUT-OFF ASSEMBLY



- Part # 218690 M-PAB2NC-B3/8,10-32F (Kit) (Includes Items Listed Below)**
- Part # 218890 RG2NO-B1/4-20F NPM (Standard Regulator)**
- Part # 231390 M-PAB2NC-B3/8,1/4-20 (Standard Shut Off Without Regulator)**

Available without Regulator
1/4-20 Female Output
Flow Rate: 2.5 SCFM @ 50 psi

PORT DEFINITIONS

1. 3/8 Copper Compression Input
2. 10/32 Female Output-Off of Regulator
3. 10/32 Female Auxiliary Output (Plugged)
4. 10/32 Female Auxiliary Output (Plugged, Pre-filtered Port)
5. 10/32 Female Auxiliary Outputs-Off of Regulator (Plugged)
6. 1/16 Barb Pilot
7. Actuation Relief Vent