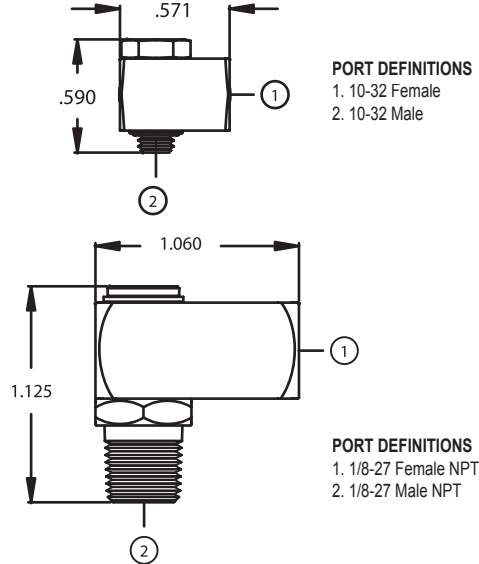
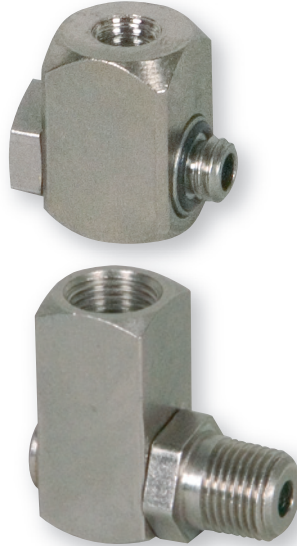


## RIGHT ANGLE SWIVEL



### Design Considerations

The 990 Swivel Series promotes a compact design with multiple configurations to cover 10-32 Right Angle applications. The standard 990 Swivel has low torque and is sealed with Buna-N O-ring. Ethylene Propylene, Fluoroelastomer (Viton®) are available.

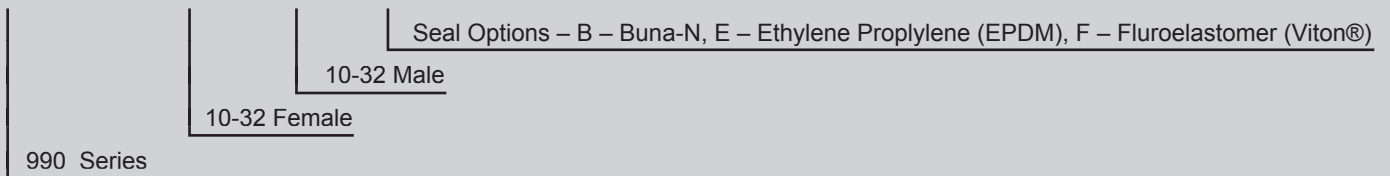
### Specifications

Body: Electroless Nickel Plated Brass

Maximum Operating Pressure – 0 - 500 psi  
 Maximum Operating Temperature – -25°F to 250°F  
 CV – .1 (Part # 252290)  
 CV – .7 (Part # 267390)

### Example of How to Order

Swivel 990 10-32F 10-32M B Part Number: 252290



Swivel 990 2F 2M B Part Number: 267390

